

SUN



Homes-Extra

NEW HOMES & CONDOS

APRIL 2 - 8, 2011

WWW.CALGARYSUN.COM/HOMESANDCONDOS



ON THE COVER

Williamstown in Airdrie

INSIDE

Carma Becomes Brookfield Residential
Condo: Streetside's Evanston Square



Homes-Extra

NEW HOMES & CONDOS

COVER STORY



PHOTOS COURTESY VESTA PROPERTIES

FAST FACTS

BUILDER/DEVELOPER: Vesta Properties

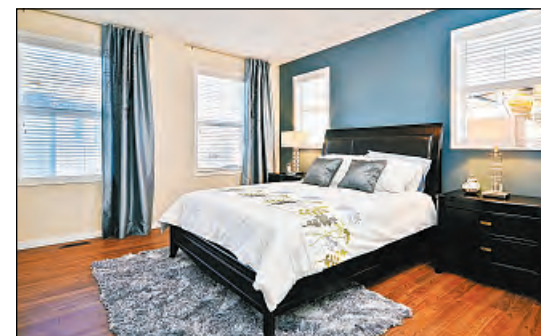
AREA: Williamstown, Airdrie

PRICE: Townhomes starting in the low-\$200,000s; laned detached homes starting in the high-\$200,000s and two-storey single-family homes starting in the mid-\$300,000s

DIRECTIONS: Take Deerfoot Tr. north to Airdrie. Take the 567 (Veteran's Blvd.) exit, heading west. Turn right onto 8 St. and look for signs.

HOURS: Monday to Thursday, 2 p.m. to 8 p.m.; weekends and holidays, noon to 5 p.m.

CONTACT: For Phase 1 single family showhomes, call 403-980-0741; for Phase 2 enclave single family showhomes, call 403-980-3345; for townhome showhomes, call 403-980-9209 or visit vestawilliamstown.com



"The lifestyle is first-class and the community is ideal for families."

Vesta's Williamstown has acres of value

In Airdrie's newest master-planned community, Williamstown by Vesta, gracious streetscapes, a wide range of homes and 60 acres of open green space make the perfect place for families to grow up.

Lauren Barr

CALGARY SUN

"People are noticing that the community feels differently," says Curt Woodhall, senior marketing manager with Vesta.

"More mature buyers are relocating from Airdrie because they like the openness that is offered along with the more modern finishings and floorplans."

With a new elementary school scheduled to open in 2012, young couples with or without children are also finding this is the right place to settle down, as the community is ideal for families, Woodhall says.

"The prices are considerably lower here, the lifestyle is first-class and the community is ideal for families."

The architecture in the area is heritage-inspired, with rich natural colours, high-end

detailing and materials creating a striking streetscape.

"Decorative gable details, oversized windows adorned with flower boxes and welcoming front porches enhance your first impressions of Williamstown," Woodhall says.

"The professionally landscaped boulevards with tree-lined streets create the feeling of an established neighbourhood."

With a wide range of styles and prices, there

is a home to suit any lifestyle.

"This gives us the ability to find a home that fits most families' needs and enables people to live in the same community for years, through various stages of their life," he says.

"Our single-family homes with rear garage or concrete pad have convenient land access, beautiful arts and crafts-style exteriors and spacious modern floorplans.

"They are perfectly suited for new families

and empty nesters alike." Vesta offers townhomes, bungalows, two-storey homes with walkout basements, as well as single family homes backing onto parks and green space.

With townhomes starting in the low-\$200,000s, laned detached homes starting in the high-\$200,000s and two-storey single-family homes starting in the mid-\$300,000s, homes in the area are not only affordable, they offer excellent value and investment potential to the home buyer.

Sixty acres of Williamstown is dedicated to parks and open space, including a 45-acre environmental reserve, Nose Creek, an extensive trail network, pedestrian bridges and benches.

"The pathways in and around Williamstown are very popular," Woodhall says.

"People walk and bike through here to connect with nature and view the local wildlife.

"Buyers are recognizing the exceptional value found here, making Williamstown one of the best-selling communities in Airdrie."

